

Shepherd's Voice

HOPE

PEACE

JOY

LOVE

DECEMBER 2016

Welcome!

Especially if this is your first time at Good Shepherd, welcome! May your worship today inspire and empower you for Christian discipleship this week. We ask that you provide your name, address and phone number in the blue **Friendship Register** at the end of the rows. We promise not to pester you.

Child care is available in the nursery from 8:45am–12:30pm; however we welcome and encourage our little people to join us for worship! Please reserve the rear seats for parents with small children and for latecomers. Activity bags for kids are also available in the hallway.

Assisted Listening Devices are available for those with difficulty hearing. Please **inquire at the Sound Booth**.

Whether you are here for the first time today, or have been here for ages, we want to help you navigate the information maze here at our church.

Keeping In Touch

Information Tables in the Welcoming Space:

Here you'll find a lot of good information that we don't always report on in print. This is also the place to look for signup sheets for various activities.

Our website is at:
<http://www.goodshepherdreno.org>.

Are you on Facebook?

Become a fan of "Good Shepherd Lutheran, Reno" and receive regular inspiration, updates, and connection throughout the week! ❖



A Reconciling in Christ Congregation

Cover Story

Tis the Season of Advent—Let's share our Hope, Peace, Joy and Love with each other . . .

Features

- 3 A Message from Pr. Erik Allen—Keep Awake!
- 5 Serving in Worship
- 6 A Message from Pr. Scott Trevithick
- 7 A Time for Change from Kristin Lessard
- 8 Welcome New Members!
- 12 A Christian Call to Response in a Post-Election America
- 13 Comfort for Those Who Mourn

Departments

- 4 Looking Ahead in Worship
- 10 Faith Formation
- 12 Governing Board Update
- 14 Capital Campaign Update and Financial Updates

Upcoming Events

Hearts & Hands Quilters

Mon., December 5 & 19, 9am-1pm, in Shepherd Hall

As the group gets ready to celebrate 20 years of quilt making, they welcome and encourage new members to come spend a morning cutting fabric, tying knots and enjoying the fellowship of this fun group - no quilting experience required!

The quilters are planning a quilt show for next July during Artown. If you have an antique quilt or a newer quilt you would like to have displayed during the event, please take a photo of it, measure the appropriate size with a brief description and send it to judihein@gmail.com or call 750-2347.

O.W.L.S. & Rebekah Circle Christmas Potluck

Saturday, December 10, 2016, 12:30pm, Shepherd Hall

IT'S A POTLUCK!! Bring a favorite dish to share. STUFFED TOYS can be brought to be given to children at GOOD SHEPHERD'S CLOTHES CLOSET! (Please DON'T wrap them; children have FUN looking through the bin for one they can call their very own to take home.)

Movie Group

We will not be looking for a movie during this Holiday Season since most everyone is too busy. We will resume our movie going on January 16. The chosen film will be announced in the bulletin for the service on January 15. Please call or email Linda Robb if you have any questions or suggestions. lrharmony@sbcglobal.net or 825-0395.

Women's Coffee Club

The Coffee Club will NOT be meeting in December. We will meet at **The Coffee Bar** (682 Mt. Rose St) on **Friday, January 20 at 9:15 am**. This was our first coffee meeting spot in January 2016 so it feels like the perfect spot to kick off the New Year!

A Message from Pr. J. Erik Allen

Keep Awake!

Truth be told, Advent is the season for kids or at least the kids among us. When the days get shorter and the nights grow longer the wise response is to enjoy the extra rest—to go to bed earlier. It's as if Mother Nature is telling us—enjoy the rest while you can! Be like the animals that stay warm and sleep in!

But this is not what the season of Advent or the children among us desire. As we hear in the gospel reading for the First Sunday in Advent, *"Keep awake therefore, for you do not know on what day your Lord is coming . . . Therefore you also must be ready, for the Son of Man is coming at an unexpected hour."* (Matthew 24:42, 44)

Like most children my anticipation for Christmas grew throughout December. By the time Christmas Eve rolled around I was ready to do my best to stay up for Santa. I wanted to see if I could catch 'Jolly Old St. Nick' in action. I wanted to see for myself what happened when he arrived! Yet, my parents were adamant—Santa wouldn't come until *all* the children in the house were asleep. There would be no presents, no "Merry Christmas to all," until everything was quiet. Even with new plans in place every year, I was never able to trick my parents and stay awake to see Santa pulling presents out of his bag and gently place them under the tree.

Advent keeps us on our toes like that. It doesn't allow us to rest complacent or to feel like we are in control. Matthew's words simply make obvious something that we already know. *In this life we are never sure about what will happen next.* We are called to resist the desire to hibernate in the warmth of what makes us comfortable and rather to embrace the excitement of waiting. To become children again; waiting, not for treasures to come our way, but to accept that we cannot know how, when or where God will interrupt our lives compelling us to offer who we are in the name of the one we know is coming!

We are in essence children waiting for Santa, but with the courage to live into the unpredictability and messiness of life! As the great Advent hymn, "O Come, O Come, Emmanuel" reminds us—Emmanuel is coming to ransom us, to embrace us, to free us, to open wide the gates, to refresh and restore us, and put death to flight. This is the gift of Advent—the gift we await!

Grace and peace,
Pr. Erik



**KIDS' COMMUNITY
JOKE OF THE WEEK!**

KNOCK, KNOCK!
WHO'S THERE?

DARIUS
DARIUS WHO?

"DARIUS" TO SKI DOWN THE BIGGEST HILL?

Looking Ahead in Worship

By Deanna Gaunt
Director of Worship

An Advent Reflection

As I was pulling out our Christmas boxes to find decorations for our house, I came across the nativity scene that we used when the kids were little. They are ages 22 and 24 now so it has been awhile since I took them out of their box! As I pulled out the traditional characters--Mary, Joseph, baby Jesus, the wise man and some animals--I noted that we had also added somewhere along the line, a chipmunk and a purple dinosaur (probably Happy Meal toys!) that had become permanent parts of our nativity story. Maybe this was God's way of nudging us closer to inclusivity in our stories! Could our traditional characters welcome some new beasts? My children had no problem with this whatsoever! Their question was "why wouldn't we include them"? And that is my challenge to you during this Advent season: Why wouldn't we welcome others into our good news of great joy?!



Advent Worship & Soup Suppers at 6pm—Worship at 6:30pm

Wednesdays—Nov. 30, Dec. 7, Dec. 14 & Dec. 21

This year Good Shepherd will be hosting a weekly soup supper and Advent Worship on **Wednesdays** throughout the season of Advent. We'll begin at **6pm** with a **simple meal** of soup and salad in Shepherd Hall. Signup sheets are available at the welcome table if you're able to bring something, **but we only need a few pots of soup each night**, so you're encouraged to attend even if you aren't able to bring any food. At **6:30pm** we'll move to the worship space for a brief service using **Holden Evening Prayer**. During these services we'll be focusing on God's response to our deep hunger (both spiritual and literal) as we continue our Advent collection tree in support of the ELCA World Hunger team. Our weekly themes will be as follows:

- Weds. 11/30 - A People of Promise (Matt 24:36-44)
- Weds. 12/7 - Bearing Fruit (Matt 3:1-12)
- Weds. 12/14 - Healing of the Whole World (Matt 11:2-11)
- Weds. 12/21 - God in Unexpected Places (Matt. 1:18-25)

Sunday Worship . . .

Holy Communion is celebrated at all worship services unless noted

Worship is at 7:30am / 9am (Contemporary with band) / 11am (Traditional with adult choir)

- Dec. 4** Worship at 7:30am 9am & 11am
- Dec. 11** No 7:30am worship today only. Worship at 9am & 11am. **Kids Community Advent Musical: "Star of Wonder"**
- Dec. 18** Worship at 7:30am 9am & 11am
- Christmas Day Worship with Lessons and Carols of Christmas | December 25 - 10am**
- New Year's Day Worship with Lessons and Carols | January 1 - 10am**

Christmas Eve Worship December 24 | Candlelight Worship with Holy Communion

4pm & 6pm Contemporary worship with 4Gsus band

8pm & 10pm Traditional worship with Choir & Great Basin Brass & Timpani



Invite Friends to Christmas Worship!

Do you know someone, a friend or co-worker or neighbor, you might invite to join us for Christmas worship at Good Shepherd? The inviting is easy. Just tear off the back cover of this issue of the Shepherd's Voice, and hand it to your friend along with some words of invitation. Sometimes being a truly "welcoming" church involves more than just waiting for people to show up!

Christmas Poinsettias

Each year beautiful poinsettia plants are used to decorate the church for Christmas Eve. If you would like to purchase a plant, fill out a form on the Welcoming Space table (or inserted in this newsletter) and place it in the offering plate or turn it in at the office. Cost is \$10 and they can be picked up following Christmas Eve worship.



ADVENT

Shabby Santas clanging
Bells in every mall
Fill the pot for those who've got
No wreaths to deck the hall.

Clothe the needy children;
Bring cans to feed the poor
Take pity on the homeless;
Throw wide your condo door.

In spite if all the clamor
I guess I could do worse
Than let the Christmas spirit
Open up my heart and purse.

by Elizabeth Lenz

Serving in Worship

This Advent you may notice a few new things happening in worship, besides the Advent Wreath! In an effort to involve more people in worship, who may not feel comfortable standing in front of people as a reader or assistant minister, we've added or tweaked a couple of volunteer roles at the 9:00 and 11:00 services.

- **Altar Servers** are now divided into two responsibilities: Cross Carrier and Candle Lighter. The Cross Carriers will remain the older (Confirmation and up) students who can carry the cross carefully and respectfully. This is especially true given the weight of our processional cross. Children from the age of 4th grade and up are invited to serve as Candle Lighters. This is a great way to introduce these older elementary students to service in worship and prepare them for the greater responsibility of Cross Carrier that will come in just a few years time!
- **Communion Carriers** will now carry the bread and wine forward during the offertory at both the 9:00 and 11:00 services. This is a concrete expression of our theological belief that we offer these common elements from our lives to God, in order that God might enter through them into us at the sharing of the communion meal. It's also a great way for the whole congregation (from the youngest to the oldest) to participate in this simple gesture of bringing forward the gifts.
- **Assisting Ministers** have always been a part of the 11:00am service. Now, in a slightly different way, we are encouraging members—especially children and youth—to help lead the opening litany at the 9:00am service as well.

If you or anyone you know is interested in serving in worship at any of our services—in one of these new ways, or any of the other plethora of ways that have always been available to serve, please contact Deanna at Deanna2@goodshepherdreno.org or the Church Office. We're happy to answer any questions and to help you find the right place to serve! After all, many hands make lighter work for all of us!

Yours in Christ,
Pastor Amy

Elves Needed!!

It will soon be time to prepare our space for Christmas Eve worship. Please save the date of **December 18!** We need people to carry and lift, get up on ladders, and assemble and decorate the tree. We'll also need people to bring finger foods for our workers. See the signup sheet on the Welcoming Space table. We will erect trees, hang lights, and drink hot cider and hum a Christmas carol or two. If you can lend a hand to this process or if you are able to bring finger foods for our workers, we would love it! If you can help out, see the sign ups on the Welcoming Space table.



Children's Mitten Collections

Thank you to everyone who has already donated children's mittens for the Community Health Alliance (CHA) mitten drive. It is wonderful to see our collection table overflowing with so many mittens and gloves! Your generous donations will warm hands *and* hearts this holiday season. As a reminder, the LAST day to donate mittens is **Sunday, December 4.**



Beginning in December, our mitten trees will become ELCA Good Gift trees! As members of the Evangelical Lutheran Church in America, we are pleased to be supporting the Good Gifts program this Advent season. Your monetary donations will help purchase gifts that will grow the church, fight hunger and transform lives now and in years to come.

- \$10 – Chicks, Fruit-Tree Seedlings, Mosquito Nets, or Backpacks filled with Food
- \$12 – Water Jugs
- \$20 – Honey Bees
- \$30 – Vaccinate a Child, Support a Young Adult in Global Mission or purchase a Pig
- \$38 – Train an Evangelist
- \$40 – School Fees and Uniform for a Girl
- \$50 – Goat
- \$125 – Sheep or Microloan

To donate to ELCA Good Gifts, select an ornament and make your **online donation** at www.ELCA.org/goodgifts or write a check to Good Shepherd with "Good Gifts" in the memo line and the church will submit a check for all Good Gift donations to the ELCA at the end of December. Take your selected ornament(s) home to hang on your tree as a reminder of your support for ELCA Good Gifts or to give as a gift to a friend.

A Message from Pr. Scott Trevithick



Good Shepherd friends,

I would like to thank the members, leaders, and staff of Good Shepherd for providing a meaningful place for me to serve as pastor and for your positive response to my ministry among you. In June of 2015 I began a part-time role at Good Shepherd following the departure of Interim Pastor Paul Bodin. I led Tuesday Bible Studies, provided pastoral care, led memorial services, and supported the church staff in their ongoing work. As I began, we expected this transitional leadership role to be relatively brief, perhaps

through the summer, as the Call Team continued its work to identify a new installed pastor. As the summer progressed and the call process continued, we adapted to Good Shepherd's ongoing pastoral leadership needs and I recruited a Presbyterian colleague, Pastor Rick Mills, to be the regular Sunday morning preacher and worship leader. In the spring of 2016 when Pr. Rick decided he was going to move out of the area to live near his adult children, I added Sunday morning worship leadership to the mid-week role which I continued.

In July, the Call Team invited Pastors Erik and Amy Allen for a visit. Good Shepherd enthusiastically welcomed them and extended a call to them to be its installed pastors. They were installed on October 30 after beginning work in September.

My role has been to provide continuity of pastoral leadership during Good Shepherd's "in-between time." Though I have a contract that extends through May 2016, with Erik and Amy's arrival and their quick adaptation to their role, I have fulfilled the purpose that Good Shepherd leaders and I defined for me. Therefore, I am able to consider other pastoral ministry opportunities. That search has led me to Holy Cross Lutheran Church in Reno, where I will begin as their formal Interim Pastor in January 2017.

I wish to thank you all as members and active worshipers of Good Shepherd for your encouragement and your response to my preaching and pastoral care and other pastoral leadership. I have grown fond of you all in the time that I have been with you. I pray for your future ministry with each other and in the Reno community. As the Interim Pastor at Holy Cross and with the collegiality I share with Pastors Erik and Amy and with Deanna Gaunt, Shaun O'Reilly and Maribeth Doerr in their respective roles, I will look for opportunities to be in partnership with Good Shepherd and the other Lutheran churches in our area.

I will continue leading in worship and pastoral ministry at Good Shepherd through the Christmas Eve service and will begin at Holy Cross in the new year. I hope you'll be able to join the Good Shepherd church family during worship services on Sunday, December 18, at which the congregation will offer thanks and prayers for my pastoral leadership.

R Scott Trevithick

Thank you Pastor Scott!

*All are invited to join with us for a special **Thanksgiving for Pastor Scott's Ministry** at the conclusion of each service on Sunday, December 18th. We will give thanks for the transitional ministry Pastor Scott has shared with us, celebrate with this new call with him, and embrace both him and his family in God's blessing as they continue their Lutheran journey in a new way at Holy Cross. There will be refreshments and a time to greet Scott from 10:00-11:00 in Shepherd Hall.*



BLUE CHRISTMAS WORSHIP
Saturday, December 17, 4pm
Bethel AME Church
2655 Rock Blvd, Sparks

We are invited to a Blue Christmas Worship service by Lord of Mercy Lutheran Church and Bethel AME Church.

Worship begins at 4pm; Joint Choir Concert is at 5pm with Bethel AME and Lord of Mercy joining voices together in song. A Community Potluck meal follows the concert

Although surrounded by a spirit of togetherness and holiday cheer as millions celebrate the birth of Christ, some struggle to find the joy as they grieve the loss of loved ones. Blue Christmas services help with grieving during holidays.

A Time for Change by Kristin Lessard, Programs Coordinator

Dear Friends,

I have always been a voracious reader and a collector of words. I have notebooks filled with inspirational quotes and hope to someday create a gallery wall of quotes in my home. Lately, I've been collecting quotes from many different sources, seeking inspiration and direction. Throughout our lives, we all face difficult decisions, turning points, and change.

"Life is about trusting your feelings, taking chances, finding happiness, learning from the past, and realizing everything changes." - Unknown

I joined the staff of Lutheran Church of the Good Shepherd in August 2011 and during these past five years, I have enjoyed planning and organizing a wide range of church programs, social ministry projects, new member orientations, women's retreats, fellowship opportunities and other special projects and events. The BEST part about serving as the church Programs Coordinator has been getting to know and work with so many wonderful people and making some dear friends in the process. Thank you to everyone who volunteered, participated, and supported the various programs and social ministry projects that I developed. You always responded and always made the work worth the effort!

"Your work is to discover your work and then with all your heart to give yourself to it." - Buddha

Even though I have enjoyed and been challenged by my work at Good Shepherd, I have been feeling God pulling me in a different direction for a while now. With the unexpected length of the pastor search, I didn't feel it was the right time to respond to those nudgings though. With the recent installation of our two talented new pastors, I now feel it is time for me to resign as the Programs Coordinator at Good Shepherd and explore some new paths in my personal and professional life. While I have come to this conclusion, it has not been an easy decision for me to make. It is difficult to walk away from something that I felt called to do and that has been an important part of my life for the past five years. I am proud and happy about what we have accomplished together and pray that an abundance of good work will continue at Good Shepherd. I will truly miss seeing and working with everyone in this capacity, but will remain at Good Shepherd as a fellow church member and friend.

"There will always be a reason why you meet people. Either you need them to change your life or you're the one who helps to change theirs." - Unknown

Thank you to all who have supported my efforts these past five years to offer programs for living our faith and deepening our connections in community. It has been an honor and privilege getting to work with you in mission.

In Christ's Love,



left to right: Pr. Amy, Jennie Tibben, Deanna Gaunt, Shaun O'Reilly, Maribeth Doerr, Kristin Lessard, Pr. Erik, Andrea Lenz



All are invited to join with us for a special **Thanksgiving for Kristin's Ministry** at the conclusion of the 9:00am service on Sunday, **December 4th**. We will give thanks for the five years of ministry Kristin has shared with us, celebrate with her this new step in her life, and embrace both her and her family in God's blessing as they continue their journey with us as part of the family of faith here at Lutheran Church of the Good Shepherd. There will be refreshments and a time to greet Kristin following in Shepherd Hall.

Welcome New Members

On Sunday, November 6 we held a one day Orientation session and were pleased to welcome several new members to Good Shepherd!

Rita Akao is happy to have found Good Shepherd after attending a concert here. She lost her beloved husband, Henry, to Alzheimer's disease this past spring and has found comfort with her new church family. She is an ardent supporter of the Alzheimer's Association and actively promoted Good Shepherd's participation in the annual Walk to End Alzheimer's this fall. Rita has two daughters, Amy and Gina, who live within driving distance. Her son, David, lives in Chicago and owns an art gallery there. Rita holds advanced degrees in art, in which she specializes in watercolor compositions. After spending numerous hours in doctor's offices and hospitals with her husband, Rita was inspired to sell "watercolor peace prints" to liven up the drab walls she encountered so often. Her life philosophy is to create a peaceful, healing and serene environment and to use her passion for art and compassion for people to create peace and the hope of new possibilities.



Rita Akao

Pastors Amy & Erik Allen are excited to be the new co-lead pastors at Good Shepherd. They moved to Reno from Georgia this past September with their three children, Becca, Joanna, and William. Becca (9 years old) is in the 4th grade at Caughlin Ranch Elementary School. She enjoys reading and playing the violin and, like her parents, has an excitement for participating in and being involved in church and worship. Joanna (5 years old) is attending preschool at Nevada Sage Waldorf School. She enjoys spending time with her family and friends and is almost always busy either singing or making believe. William (23 months) currently attends the McCarran KinderCare in Sparks, but looks forward to joining his big sister at the Waldorf School after he turns two. He is full of energy and enjoys exploring his world and (as many of you may have noticed) the volume of his voice! They are grateful for the warm welcome that they have received at Good Shepherd and look forward to being a part of extending that welcome to others for many years to come. They were particularly drawn to this community because of its openness to welcoming all people and its commitment to living lives informed by God's justice and love.



The Allen Family

Tim and Sandi Dean moved to Reno from Oklahoma five years ago. They have always wanted to live in the mountains, so feel like they have found their perfect retirement location. They enjoy hiking in the beautiful mountains that surround the area. They chose to come to Good Shepherd because of the many opportunities for spiritual growth and the exceptional music program.



Sandi & Tim Dean

Dana Grigg moved to Reno with her husband, James, in June of 2010. They have two children, Logan, 5, and Ella, 2. Dana is a JAG and works full-time at the Joint Force Headquarters, Nevada National Guard in Carson City. James is a contractor and owner of LRG Construction, LLC. Dana grew up in the Lutheran Church in her hometown of Winter Haven, Florida. She has been searching for a church to introduce her children to the Lutheran faith and was thrilled to find Good Shepherd.



Dana Grigg

Chip Hobson grew up in Denver, Colorado prior to attending the University of Southern California where he met Susie Aker. Chip and Susie settled in Reno following their 1992 wedding at Lutheran Church of the Good Shepherd. They now enjoy all Reno has to offer with their two children Annika (16) and Luke (13). Following a 10-year career as a Physical Therapist, Chip is now involved in real estate investment and development including serving as the Executive Director for non-profit affordable senior housing developer Silver Sage Manor, Inc. Chip is very pleased to be a new member of Good Shepherd after attending services for nearly 25 years.



Chip Hobson

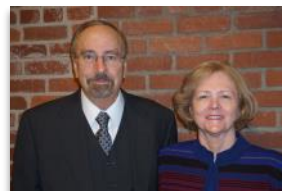
Paul and Brooksley Mihoch moved to Janesville, California in 1989. Paul is from Wilkes-Barre, Pennsylvania and Brooke is from San Rafael, California. They met while both serving in the U.S. Navy in Kamiseya, Japan. After completing their enlistments, they moved to Norfolk, Virginia where Paul worked at the Norfolk Naval Base and Brooksley furthered her education at the Virginia Technical Institute. During their stay in Virginia their son Nathanael was born. Soon after they moved to Janesville where Paul ultimately retired from the State of California and Brooksley retired from running her own business as a Cosmetologist. They are currently in the process of building a new home in Reno and are both thankful and excited to have found Good Shepherd.



Paul & Brooke Mihoch

Welcome New Members

Bob and Mary Ann Olson both grew up as Lutherans in Council Bluffs, Iowa. Mary Ann served as a teacher and active church volunteer for many years. Bob is a semi-retired Certified Fundraising Executive. They have lived in Omaha, Nebraska and Alexandria, Virginia for most of the last 28 years and have three grown children. Mary Ann's hobbies include antiques, reading and walking their cockapoo dog, Midnight. Bob enjoys yard work, playing the trumpet and guitar and is a licensed ham radio operator.



Bob & Mary Ann Olson

Chris and Priscilla Nielson moved to Reno from Boise, Idaho for new jobs to help support their children's university costs at northeastern schools. Both work in government and are close to retirement. Time has limited recent activities, but in the past, they have enjoyed hiking, skiing and gardening. As retirement nears they are looking for new pursuits including environmental protection, social support and income inequality. Their children are now working and starting families in Seattle and Minneapolis. They are thankful to have found a church that is so welcoming and look forward to growing their spiritual life with Good Shepherd.



Priscilla & Chris Nielson

Valerie Phillips was born in Reno and raised in Los Gatos, California. She and her husband Tom were married in 1991 and lived in North Florida before returning to Reno four years ago. They have a son and four daughters and three grandsons and a granddaughter. Val works for the Washoe County School District. In her spare time, she enjoys rose gardening, reading, crocheting, and is trying to learn French.



Val
Phillips

Rachael Pitts is a retired city planner from Arizona. Planning took her to Alaska for several years and she is now glad to be back in the lower 48. Rachael's ten years in the Army also took her to Belgium, South Korea, the Pentagon, Fort Bragg, and White Sands Missile Range. She chose lovely Reno as a place to retire. Rachael was brought up as a Lutheran and chose to attend an RIC church. As a member of Reconciling Works, she is proud of ELCA's progressive policies.



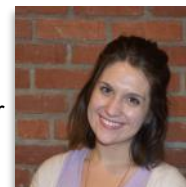
Rachael
Pitts

Erik Schoen moved to Reno in 1996 to follow the love of his life, Stephanie. They are the proud parents of Chelise, now 29, who fills their lives with divine understanding and grace. Though Stephanie's father (Faye Miller) was previously a pastor at Good Shepherd, Erik was reluctant to get more involved with Good Shepherd until hearing a sermon from Pastor Carl in which he acknowledged that both the church and God's love were large enough for doubts. As well, Erik appreciates Good Shepherd for its commitment to all things social justice, a cause to which Erik has been in service for the past 20+ years through his nonprofit and other work.



Erik
Schoen

Jaclyn Shearer moved to Reno about a year ago, after finishing a year of service with AmeriCorps. She lives in Reno with a pet bunny named Rebel. In her spare time, she mentors with Big Brothers Big Sisters, reads, and watches way too much Netflix. You may recognize her face from News 4 and Fox 11 where she is a meteorologist. She loves Good Shepherd because it reminds her of her church at home in Pittsburgh.



Jaclyn
Shearer

Margaret Smith has transferred membership from Hope Lutheran in Walnut Creek, CA. She has been involved with the Lutheran Church since 1945, participating in its progressive changes over the years. She joined the Women's Army Corps in 1941 during WW II. In 1949 she moved from South Dakota to the San Francisco Bay Area, where she married and raised a family. After many years of retirement, she moved to the Cascades Retirement Home in Spanish Springs to be near her family in Reno.



Margaret
Smith

We were also pleased to welcome **David Carlson, Jennifer Stoner and her children Hailey and Jordan, and Richard Weiher** as new members!

KIDS' COMMUNITY AND YOUTH GROUPS!

**Kids' Community & Youth Groups will be off on December 25th & January 1st.
We'll start back together on January 8th!**

Kids' Community Advent Musical:

All kids are invited to join the "choir/readers" and we practice during a small portion of Kids' Community Sundays in December. Then, the final dress rehearsal for ALL is Saturday, Dec. 10th, 10-Noon, with the prek-k class joining in at the beginning to practice with us from 10-10:30am. **Then! The musical is at the 9am & 11am services on Sunday, Dec. 11th!**

Note: Kids' Community will meet again on Sunday, Dec. 18th for the last meetings in classes for the year.

Baptismal Journey

Dinner and Gathering | January 8, 4:30-6:30pm

Baptismal Journey is a faith formation program at Good Shepherd that supports young children and their parents, grandparents and baptismal sponsors in growing faith in the home. It is especially intended for families and sponsors of any children that have been baptized in the past five years. However, the program is not limited to just this group; families with older children or children who have not been baptized are welcome to participate. We will share a meal, as well as some intentional ideas about living our baptisms and encouraging the very young people in our lives to be centered in their baptisms too. This event is held at the church. **Please send any questions and all RSVPs to Shaun@goodshepherdreno.org. RSVP by Wednesday, Jan. 4th.**

Middle School / Confirmation:

- Dinner and meeting – Sunday, December 4th, 4pm-6pm. At the church!
- We are on for Sunday mornings in December, our last meeting of the semester is Sunday morning, December 18th.
- Confirmation resumes on **Sunday, January 8th**.

High School Youth:

- Dinner and meeting – Sunday, December 4th, 4pm-6:30pm. We're making dinner for the Journey with Christ group, and we're catching up and sharing life. Come join us! Share, pray, anticipate the light of Christ.
- We are on for Sunday mornings in December, our last meeting of the semester is Sunday morning, December 18th.
- Join in the Youth Christmas Party. Details below.

ALL Youth Group Christmas Party! Wednesday night, December 21st



First, join in the church-wide soup dinner and sung prayer service. **Then, at 7:15pm, we break out the dessert bar and go Christmas crazy!** Once again, we're doing a homemade gift exchange (or, home-found item, etc): bring a gift (wrapped). We'll play a game to pick gifts and we'll all end up with something. Make it homemade or something home-found-ish . . . nothing more than \$10 cost for materials. We'll have food (mostly dessert), play games, and gift exchange! **RSVP to Shaun@goodshepherdreno.org.**



Journey With Christ

New Beginnings

"So if anyone is in Christ, there is a new creation: everything old has passed away; see, everything has become new!" 2 Corinthians 5:17

As I looked around Good Shepherd last Sunday, I couldn't help but remark at all that is new. We have a beautiful new space in which we get to worship. We have not one, but two amazing new pastors leading us in ministry. We have new members who affirmed their baptisms and joined our community of faith. We have had new children come into our midst. There are so many happy beginnings for our congregation and those around us.

We are also reminded of the changes that aren't quite as joyous. We have seen some around us lose loved ones. We have had friends fall ill. We have seen a rise in hate crimes against our brothers and sisters in the world. We have seen economic hardship in our community. Many people are learning to live with a new reality, which may seem hopeless at times.

Within all the change, good and bad, there is one constant, the love Christ Jesus has for each and every one of us. Though our faith in Him goes through times of great elation and times of struggle, His love for us is never-ending. Our relationship with Christ is one we turn to in times of hardship and in times of joy, and He is always there, ready for us. Like any relationship though, it takes work, and the more you put into it, the richer that relationship becomes.

Journey With Christ is an adult faith formation class that helps build and nurture our relationship with Christ and with our congregation. It is an opportunity to share our stories in a small group setting; our stories of doubt, of belief, of sadness and of joy. We build relationships with fellow Lutherans and with our faith. Wherever we are on our journey, Christ is ready for us to take the step to invite Him into our lives.

The inquiry phase of Journey With Christ continues December 4th. It is a time to come and see what the process is about, and how amazing it can be to share our faith together.

Come. Join us as we renew and strengthen our relationship with Christ. All are welcome!

Journey With Christ Leadership Team

- Teri Estes - terischiro@gmail.com – 916-955-8956
- Dolly Keller - elizabethdollyk@gmail.com – 775-870-1722
- Adam Welmerink – awelmerink@gmail.com – 775-622-1874

Adult Faith Formation:

We continue with Rob Bell's **Nooma** videos in December, meeting on the 4th, 11th, and 18th. All are welcome! Then, we'll be off until January 8th.

Beginning on January 8th, Pr. Amy Allen will begin leading this 10am adult group through an interesting, 7-week ELCA study:

Faith, Sexism, Justice: Conversations Toward a Social Statement

The ELCA Task Force on Women and Justice: One in Christ invites you to join a growing conversation and to add your input. After receiving feedback from more than 100 Listening Events and hearing from several dozen specialists, the task force has written the study "Faith, Sexism, Justice: Conversations Toward a Social Statement" as way to invite broad engagement with the questions and issues.

Make plans to join this important group conversation on Sundays at 10am in January and February. (Group meets downstairs in Luther Hall).

Invitation to Adult Bible Classes

Tuesdays | Noon

Join this Bible class led by the upcoming Sunday's preaching pastor at noon on Tuesdays in the Ministry Center. Feel free to bring your lunch. The coffee's on us.



Thursdays | 3pm

Here is another opportunity to study God's Word with this self-led group. Join us on Thursdays at 3pm in the Ministry Center. All are welcome! ❖

A Christian Call to Response in a Post-Election America

By Pr. Amy Lindeman Allen
Co-Lead Pastor

In the wake of a divisive and alienating campaign and election, one common chord I've heard among both liberals and conservatives is that people are hurting and they need to be heard. A number of people have asked about how Lutheran Church of the Good Shepherd is responding to this hurt and, I believe, our first and most important response needs to be to open our ears—to truly *listen to* and *hear* the hurt in our country, in our community, and among our neighbors.

But when we have heard the cry of another, our role cannot stop there either. In faith, in love, in the righteousness and justice of God, we must also respond. For those who are ready to *listen*, for those who need to be *heard*, and for those who are ready to *act*, this is an invitation.

Lutheran Church of the Good Shepherd invites you to:

Pray with us on **Wednesday nights in Advent at 6:30pm, beginning November 30**

As we await the one who will “give light to those who sit in darkness and in the shadow of death” (Lk 1:79a), our Advent hope draws us into the world as people of promise for whom the darkness of this world is always being overcome.

Study with us as we give feedback on our national church's response to **Faith, Sexism, and Justice** on **Sunday mornings, 10am beginning January 16.**

This is an opportunity to explore how matters of justice and sexism intersect with faith and to provide valuable input into the national church's response to these issues in the future.

Serve with us as we continue to spread the good news of God's love for ALL PEOPLE in our community and beyond.

Contact the Church Office to learn more about our Make a Difference Team or visit our ministry fair coming up on Sunday, January 22nd from 10-11am in Shepherd Hall. Find out what ministries are working for justice and reconciliation in our congregation, learn how to connect, or suggest new ways that we as a congregation can get involved!

Love. Always and without limits. For this is the grace and the challenge with which Christ has already blessed us.

In the days after November 8th, Mark Holmerud, Bishop of our Sierra Pacific Synod of the ELCA wrote this: *“I will stand with those who call the people of this nation to listen to our better angels and seek the welfare of ALL people because the diminishment of one person is the diminishment of all. I ask for your prayers that I might be an instrument of God's truth and peace and healing and hope in that conversation. I will pray the same for you. May God be our refuge and strength as we move forward in faith together.”*

In the wake of President-Elect Trump's election, as it would also have been in the wake of Secretary Clinton's election, our call as Christians continues to be to “do justice, love kindness, and walk humbly with your God” (Micah 6:8). Where we see hurting, we are called to come to our neighbor's aid. Where we see hate, we are called to speak love. And where we see injustice, we are called to do justice. This is what it means to be a reconciling people of God. This is what it means to be a community of hope. This is what it means to be a Christian.

May we at Lutheran Church of the Good Shepherd prove worthy of the task.

By Nicole Guyette
Governing Board Member

Governing Board Update

Thank you to everyone who participated in the Capital Campaign, Heritage and Hope, and in the Stewardship Campaign. If you intended to make a pledge to either, and weren't here for the distribution and collection of pledge cards, please contact the office.

While we have focused on Stewardship in more of a concentrated way through the specific campaigns, when we consider that Stewardship is how we give of ourselves—our time, our talents, and our resources. we are all engaged in Stewardship throughout the year. Thanks to those of you who give of yourselves throughout the year, whether it's through making a meal for someone, bringing in food for shared harvest, baking cookies for the local firefighters and police, participating in a march for justice, or making a donation for something specific, it is your stewardship that makes it possible for us to reflect God's love in our world.

God's blessings to you all as we prepare this time of year to celebrate the birth God's greatest Gift to us: his son, Jesus.

Comfort for Those Who Mourn—Wisdom from Good Shepherd's Grief Group Participants

Pastor Scott Trevithick and Pastoral Care Assistant Maribeth Doerr have been leading a Grief Support Group for those who have experienced the death of a loved one within the last year or two. The group will conclude a 10-week series on December 13. We've been reading a very helpful book, *Understanding Your Grief: Ten Essential Touchstones for Finding Hope and Healing Your Heart* by Alan Wolfelt.

Through our discussion, the group has created a safe place to understand our own responses to loss, taken courage to go through grief rather than avoid it, learned to find trusted friends and express oneself, been reassured that "we are not crazy!", aimed to develop a new self-identity and sense of meaning, and learned to care for ourselves and accept the care of others. One member described how the group has allowed participants to be introspective while also encouraging helpful relationships to develop.

As Christmas approaches, people who are mourning the loss of a loved one can often experience loneliness or feel "the blues" as holiday songs like *It's the Most Wonderful Time of the Year* urge us to be happy, advertisements continually display couples holding hands or families gathered together, and we are reminded of the pain from how much we miss our loved one.

Experiencing a loss can have a powerful impact on our faith in a range of ways. Participants have described feelings of anger toward God and distance from God as well as developing a deeper appreciation for the support offered by our common Christian faith, particularly when our own families are limited in the support they're able to offer.

Many people who would like to support a friend who has experienced a loss worry that they must say just the right thing, as though that word could make it all better. If you'd like to be a comfort to a friend, here's some wisdom offered by our Grief Group gleaned from our book and discussion:

Here's what we have found to be helpful:

- Be willing to listen.
- Refrain from giving advice.
- Display humility in your response to the one who has experienced a loss.
- A hug, comforting touch, smile, or simple "I'm sorry" can show your support. You don't have to find the "right" words.
- Acknowledge the loss: "I'm sorry about your loss/your (spouse's) death. . ." and then be quiet to let them talk.
- After listening, sharing a special memory you have of the one who has died can be a comfort.
- Take a walk with your friend in nature. Virginia Lake is a great place. It will be good for both of you.

Blue Christmas Worship
Saturday, December 17
See page 6 for details

Here's some of what we've found to be *less helpful*, and an alternative approach or way to look at it:

Instead of . . .

"I know how you feel."

"Don't worry, it will get better."

"It's long enough—you should be over it by now."

"Be strong" or "Tears won't bring him back" or "He wouldn't want you to cry."

"Stay busy"

Try this:

Listen first

Acknowledge what they're feeling—something like "This is a confusing time. . ."

You don't "get over" grief; you learn to live with it. Grief comes in and out like waves in the ocean.

Tears are not a sign of weakness or inadequacy. Crying can be a way to release tension and to communicate a need to be comforted.

This may be helpful to some, but less so for others. Throughout the book, author Alan Wolfelt emphasizes that our responses to loss are unique and that individuals should trust their own pace as they learn to acknowledge their loss and care for themselves.

Grief Group participants have expressed thanks for the support they have experienced within the family of faith at Good Shepherd. May the wisdom of these folks be helpful to you as you care for others who have experienced the loss of a loved one.

Capital Campaigns

As we conclude our "Continuing the Journey Together" capital campaign which runs 2014 - 2016, we are launching the "Heritage & Hope" campaign which will run 2017 - 2019.

The pledges for "Continuing the Journey Together" were \$525,364. As of the end of November 2016, \$444,971 of the amount pledged was received. To those who have so generously met their pledges we extend a great **thank you!** Your generosity has enabled us to make our monthly mortgage payment of \$9,450 plus pay for needed capital improvements including replacing the roof on the Ministry Center, installing new air conditioning in the Ministry Center, resurfacing and restriping the parking lot, and installing air conditioning in Shepherd Hall.

In addition to pledges fulfilled, gifts from folks who did not pledge were \$307,071 which includes a one-time gift of \$285,000 designated to reducing the mortgage loan principal.

Unpaid pledges are \$80,393. We are hopeful that pledged monies will continue to come in December of this year. If all pledges are collected, we will end the year with a mortgage loan balance of approximately \$735,000.

If you have not made a pledge to the "Heritage & Hope" 2017-2019 campaign, there is still time to do so. Pledge cards are available from the church office through the end of December.

Your capital campaign co-chairs, Larry Beermann and Linda Smith, are so grateful to our members for your generous support. We are a blessed congregation!

November 2016 Financial Report

Weekly Offerings Summary:

As of Nov. 30, Our congregation has contributed **\$427,213** towards our budget of **\$495,500**. We have 4 Sundays until the end of 2016. Amount remaining: **\$68,287**.

Can we make up this difference by Dec. 29?

General Operating Fund

NOV. Income:	\$ 31,408.00
NOV. Expense:	\$ 54,635.18
NOV. Income/Expense	\$(23,227.18)
Year-to-date Income:	\$427,213.15
Year-to-date Expenses:	\$450,346.52

Income/Expense Year-to-Date:	\$ (-23,133.37)
DEC. 31, 2015 Gen. Checking Bal.	\$ 33,391.73
NOV. 31, 2016 Gen. Checking Bal.	\$ 10,258.36

Other Accounts:

Project Lazarus	\$ 924.33
Youth Fund	\$ 3,225.28
Columbarium Fund	\$ 16,787.88
Memorial Fund	\$ 4,764.59
Building Funds (all)	\$ 46,428.60
Mortgage balance	\$748,017.41

Questions or Concerns? Contact:

Deanna Gaunt, Director of Finance:
deanna2@goodshepherdreno.org
Marijo Rosevear, Financial Secretary:
financial@goodshepherdreno.org
Lou Mendes, Governing Board Treasurer:
lounkaren@aol.com

"Gathering the Pieces" General Budget Pledge Update

If you have not submitted an **Estimate of Giving for 2017**, there are forms available on the Welcoming Space table and you can place it in the offering or send it to Good Shepherd. Other stewardship resources are there as well. If you do not wish to make a pledge, please sign a form so we do not follow up with you regarding a commitment for 2017. Thank you, Good Shepherd!

As of November 30 we have received:
82 Estimates of Giving for 2017 totaling
\$275,321 for our General Fund.

Thank you for a great start to our budget planning for 2017!

New Pastor Moving Fund

Only \$2,817 remaining to fully fund our "New Pastor Fund"
\$11,381 has been received towards our goal / final expenses of \$14,198

We are almost there! We hope to zero this account out by year's end. Thank you for your generosity, Good Shepherd!

~ The Governing Board and Finance Review Teams

2nd Mile Giving—Sun. December 18 Benefits Pacific Luth. Theological Seminary

Every month on the **third Sunday** we take a special offering called the "2nd Mile Offering" which is over and above the regular offerings received. Each month we focus on a different ministry in our Synod. The December 18 offering will be distributed as follows:

- 1/3 to **Pacific Lutheran Theological Seminary (PLTS)**
- 1/3 to serve poor people locally (Project Lazarus)
- 1/3 to serve poor people worldwide (ELCA Hunger Appeal)

You Are Welcome Here

Welcome to long-time Lutherans, Christians from every tradition, and people new to the faith.

Welcome to all who have no church home, want to follow Jesus, have doubts, or do not believe.

Welcome to new visitors and old friends.

Welcome especially to all who have ever been made to feel unwelcome by the church.

Welcome to people of every age and size, color and culture, marital status, ability and challenge, sexual orientation and gender identity. We want to be clear that we welcome lesbian, gay, bi-sexual, and transgender persons to participate in the life of the congregation.

Welcome to believers, questioners, and questioning believers. This is a place where you are welcome to celebrate and grieve, to rejoice and recover.

No matter who you are or where you are on life's journey, you are welcome here.

This is a place where lives are made new.

Come and see!



**A Reconciling in Christ
Congregation**

Where to Park

On Sundays and Weekdays after 5pm:

- Good Shepherd Parking Lot (behind church) including 2 **handicap** spots & 4 **Senior** spots
- 527 California (Geoffrey Giles, Attorney)
- 490 California (Wells Fargo Bank lot)
- 505 S. Arlington (West of Professional Building)
- 299 S. Arlington (Washoe Legal Services)
- Parking lot between 522 & 530 California

On-the-street parking any day:

- California Ave., Arlington Ave., Nixon St.
- Ridge St. **EAST** of Clay St.

City of Reno requires that we **NEVER** park on:

- Lee or Ridge St. **WEST** of Clay St.

Photos

We are enjoying the ability to have color photos in our publications and to be able to take candid shots of our ministry in action. If you do NOT want your photo included in any of these publications, please alert the photographer/staff and let them know. Otherwise, you may see your face in print!

~ Deanna Gaunt

Church Office Hours

The church office (Ministry Center) is located next to the church at 357 Clay Street. Office hours are Monday through Thursday, 9am to 5pm and Friday, 9am to 4pm.

775-329-0696

Fax: 775-329-0703

Email:

staff@goodshepherdreno.org

GoodShepherdReno.org

PASTORS

Pr. J. Erik Allen

Co-Lead Pastor

PrErik@goodshepherdreno.org

Pr. Amy Lindeman Allen

Co-Lead Pastor

PrAmy@goodshepherdreno.org

Pr. Scott Trevithick

Pastor

PrScott@goodshepherdreno.org

Maribeth Doerr

Pastoral Care Assistant

maribeth@goodshepherdreno.org

FAITH FORMATION

Shaun O'Reilly

Director

shaun@goodshepherdreno.org

Rhea Agpaoa

Student Ministry Coordinator

WORSHIP & MUSIC

Deanna Gaunt

Director

deanna2@goodshepherdreno.org

Andrea Lenz

Organist

Jennie Tibben

Choir Director

PROGRAMS

Kristin Lessard

Coordinator

kristin@goodshepherdreno.org

Elizabeth (Dolly) Keller

Events Coordinator

OFFICE

Deanna Gaunt

Director

deanna2@goodshepherdreno.org

Maribeth Doerr

Coordinator

maribeth@goodshepherdreno.org

Marijo Rosevear

Financial Secretary

financial@goodshepherdreno.org



Join us December 24th

Christmas Eve Candlelight Worship
with Holy Communion

4pm and 6pm Contemporary Worship with Band
8pm and 10pm Traditional Worship with Brass/Choir

Christmas Day Worship with Lessons and Carols
December 25 at 10am

All are welcome!

*Lutheran Church of the
Good Shepherd*

Corner of California and Arlington Ave.
Midtown, Reno

goodshepherdreno.org

775/329-0696

LCCS December 2016

Sun	Mon	Tue	Wed	Thu	Fri	Sat
Regular Sunday Schedule: 7:30 Traditional Worship 8:40 Earlybird Class 9:00 Contemporary Worship 9:30 Choir Rehearsal 9:55 Kids' Community & Confirmation 10:00 Adult Faith Formation 11:00 Traditional Worship 5:00 Journey With Christ	Lutheran Church of the Good Shepherd 357 Clay Street, Reno, NV 89501 775-329-0696 staff@goodshepherdreno.org Tack this schedule to your fridge! Birthdays & anniversaries for the month on back.			1 3pm Bible Study	2 9:30am Worship Set-up	3
4 Advent 2 Regular Sunday Schedule Healing Stations at all services 5pm Journey With Christ—Inquiry Week 3	5 9am-1pm Hearts & Hands Quilters	6 12pm Bible Class 4-5:30pm Grief Group	7 10:30 Bridge Club 6pm Advent Soup 6:30pm Advent Worship	8 3pm Bible Study 4pm Capital Campaign Meeting 6pm Personnel Team Meeting	9 9:30am Worship Set-up	10 9am-12pm Advent Play Rehearsal 12:30pm Rebekah Circle/OWLS potluck
11 Advent 3 Worship at 9am & 11am services only (NO 7:30am service today—please attend the Advent play) Children present their Advent Play "Star of Wonder" at 9am & 11am 5pm Journey With Christ—Inquiry Week 4	12	13 12pm Bible Class 4-5:30pm Grief Group	14 4pm Finance Review 5pm Governing Board 6pm Advent Soup 6:30pm Advent Worship	15 3pm Bible Study 6:30pm Little Learners Christmas Event	16 9:30am Worship Set-up	17
18 Advent 4 Regular Sunday Schedule 2nd Mile Offering—Pacific Luth. Theo. Sem. 12:15 Decking of the Hall! 1pm Shared Harvest Assembly at Faith Lutheran Church	19 9am-1pm Hearts & Hands Quilters	20 12pm Bible Class Potluck	21 10:30 Bridge Club 6pm Advent Soup 6:30pm Advent Worship	22 3pm Bible Study	23 9:30am Worship Set-up	24 Christmas Eve 4pm & 6pm Family/Contemporary Worship with band 8pm & 10pm Traditional Worship with Brass, Timpani & choir
25 Christmas Day 10am Worship with Lessons and Carols (only service offered today) No Classes will be held today for adults or kids	26 Office Closed	27 No Bible Class Today	28	29 9:30am Worship Set-up	30 Office Closed	31
Pr. Erik and Pr. Amy Allen are on vacation.						

December Birthdays and Anniversaries:

Dec. 1	John & Teri Estes	Dec. 16	Marcia Paulson
Dec. 1	Melinda & Dan Gustin	Dec. 17	Judy Winzeler
Dec. 2	Laura Harsh	Dec. 18	Nancy Maiss
Dec. 2	Danielle Johnson	Dec. 18	Kinsey Walen
Dec. 3	Sam Knipmeyer	Dec. 19	Jonathan Hickox-Young
Dec. 3	Zachary Sonner	Dec. 19	Dennis & Vernie McCrohan
Dec. 4	Rebecca Melton	Dec. 20	Paul Brosy
Dec. 5	Joann Hemp	Dec. 20	Sharon Prescher
Dec. 6	Debbie Leone	Dec. 20	Theresa Serrett
Dec. 7	Angela Leone	Dec. 20	Tom & Sally Odegaard
Dec. 7	Carol Schunter	Dec. 20	Bob & Doreen Paul
Dec. 7	Joshua Smith	Dec. 21	Karen Hensel
Dec. 7	Alice Winzeler	Dec. 21	Craig Hill
Dec. 9	Christopher Reich	Dec. 22	Sam Case
Dec. 11	Andrew Cohan	Dec. 22	Ernest Holmer
Dec. 12	Barbara Waite	Dec. 22	Pat McGrath
Dec. 12	Lori & Steve Bigham	Dec. 23	Claire Trevithick
Dec. 13	Tonni Giguere	Dec. 23	Brett Williams
Dec. 13	Kay Harbeck	Dec. 23	Jane & Sam Knipmeyer
Dec. 13	Ron Lembke	Dec. 24	Deion Seamands
Dec. 13	Don Waite	Dec. 25	Albert Nelson
Dec. 14	Carol Laube	Dec. 26	Rebekah Lembke
Dec. 15	Denise Kolton	Dec. 27	Grace Gribble
Dec. 15	Barbara Kramer	Dec. 28	Greg & Maribeth Doerr
Dec. 15	Keri Moleta	Dec. 30	Ruth & John Buffa
Dec. 15	Dorothy Nichols	Dec. 31	Carol & George Schunter
Dec. 16	Kristin Lessard		

Shared Harvest Assembly

December 18, 1pm, at Faith Lutheran

Shared Harvest is a joint ministry of several local Lutheran churches who bring food once a month to working-poor families. They deliver up to 82 bags of groceries each month. Bag assembly is at 1pm, December 18, at Faith Lutheran Church in Reno.

Our shopping list for December:

- Peanut butter (We need 41 jars.)
- Chili (We need 41 cans.)
- Canned vegetables (We need 82 cans.)
- Toothpaste (We need as many as possible.)
- Toothbrushes (We need as many as possible.)

Call or text Jane Knipmeyer at 762-0940 if you can assist.

Today at Church

Sunday, December 4, 2016 | 2nd Sunday of Advent

- **Preacher:** Pr. Amy Allen; **President:** Pr. Erik Allen
- **Healing Stations at all services**

7:30am	Traditional Worship
8:40am	EarlyBird Class—Luther Hall
9:00am	Contemporary Worship
9:55am	Kids Community, Youth Groups and Confirmation
11:00am	Traditional Worship
5:00pm	Journey With Christ
Mon.	
9:00am	December 5 Hearts & Hands Quilters
Tues.	
12:00pm	December 6 Bible Class—Ministry Center
4:00pm	Grief Support Group
Wed.	
10:30am	Bridge Club
6:00pm	Advent Soup Supper
6:30pm	Advent Worship
Thur.	
3:00pm	December 8 Bible Study—Ministry Center
6:00pm	Personnel Team Meeting
Fri.	
9:30am	December 9 Worship set-up
Sat.	
9am-12pm	December 10 Advent Play Rehearsal
12:30pm	Rebekah Circle / OWLS Potluck—Shepherd Hall

Thank You Worship Leaders!

Preacher: Pr. Amy Allen
President: Pr. Erik Allen
Organist/Planist: Andrea Lenz
AV Tech: Nathan Hickox-Young
Altar Guild: Dan Ebner / Sandra Cone

7:30am Worship
Deacon: Glennis Bishop
Lector: Bill Kolton
Communion Server: Dan Ebner
Greeter: Al and Maggie Fisher
Healing Minister: Denise Kolton
Coffee Hostess: Barbara Gruenewald

9:00am Worship
Deacon: Glennis Bishop
Communion Servers: Becky Erdmann
John & Teri Estes
Greeters/Ushers: Dave & Kay Harbeck
Healing Minister: Maribeth Doerr

11:00am Worship
Deacon: Mel Cone
Assisting Minister: Ron Lembke
Lectors: Beverly Hennen, Joe McElhinney
Communion Servers: Ginny McBride
Joanne Kaufmann

Greeters: Dee & Chuck McCallion
Ushers: Craig Hill, Jeanne Johnson
Healing Minister: TBD
Coffee Hour Hostess: Gale Lundquist
Advent Candle: Robertson family
Candle Lighter: Kady Walen
Cross Carrier: Kinsey Walen
Communion Carriers: Walen family

Sunday, December 11 3rd Sunday of Advent

- Worship at 9am & 11am
- Advent Play at 9 & 11am services
- No 7:30am service today